

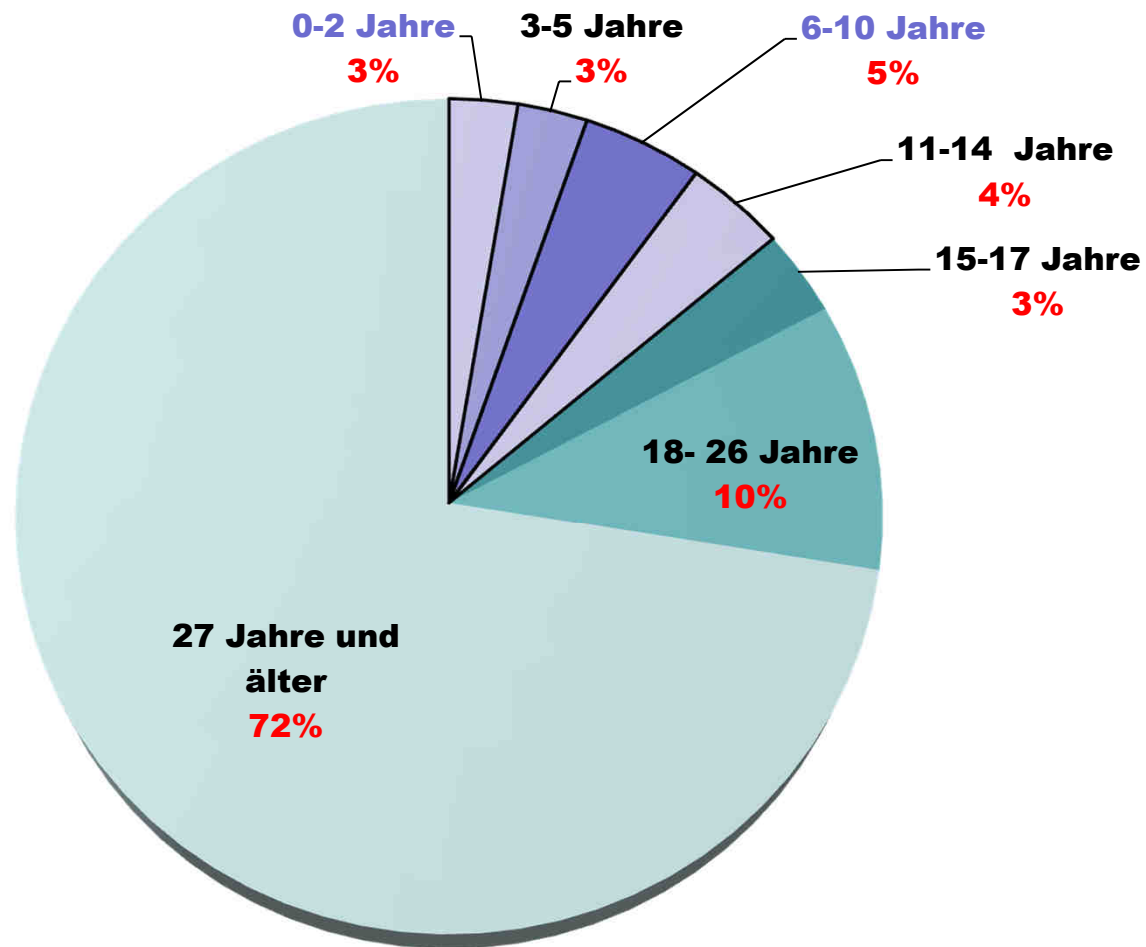


SGBII-Daten

02.02.2016

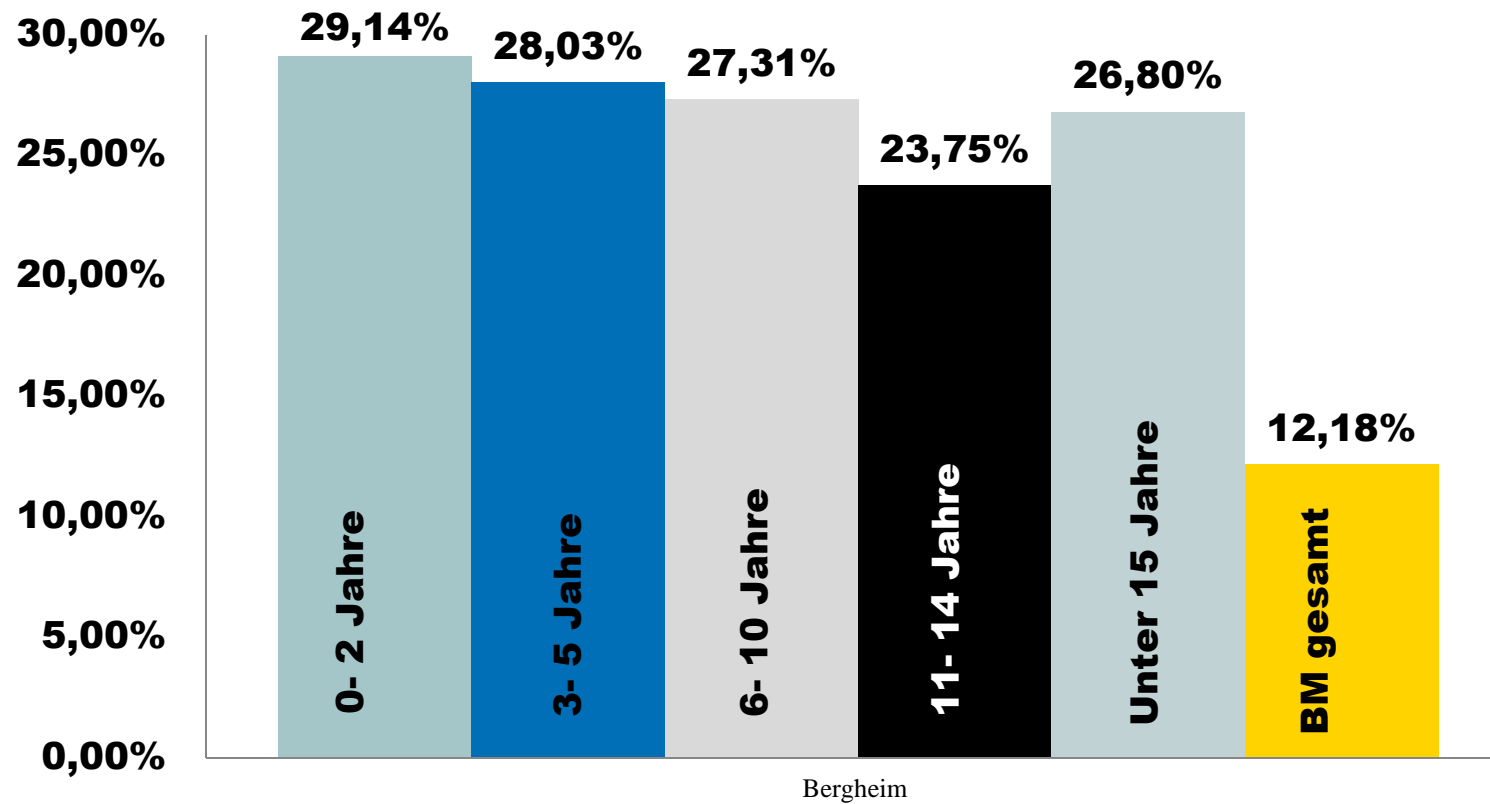
Britta Fuchs

Altersstruktur Bergheim

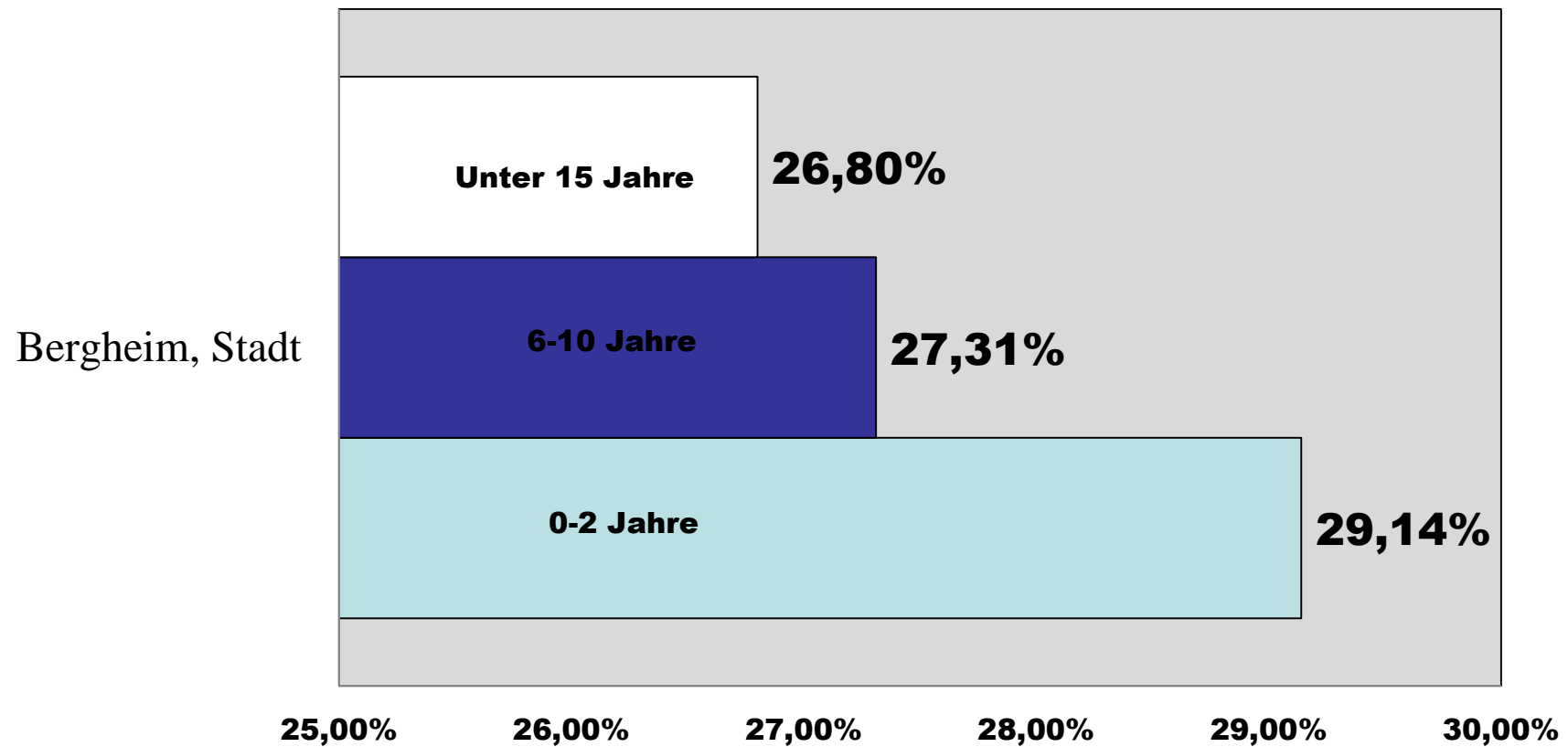


**Bergheim:
63.310 EW**

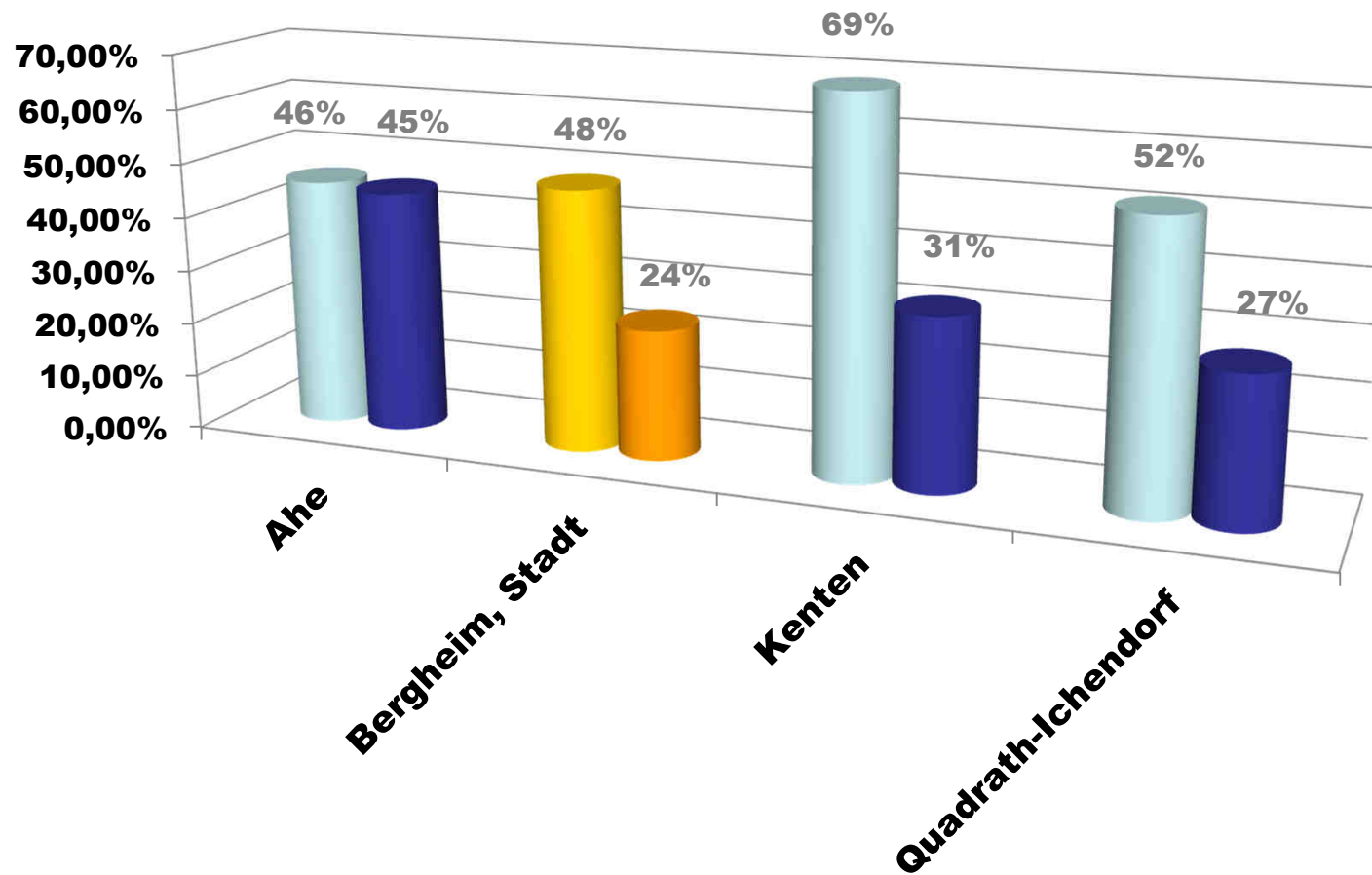
SGB-II-Bezug in Bergheim



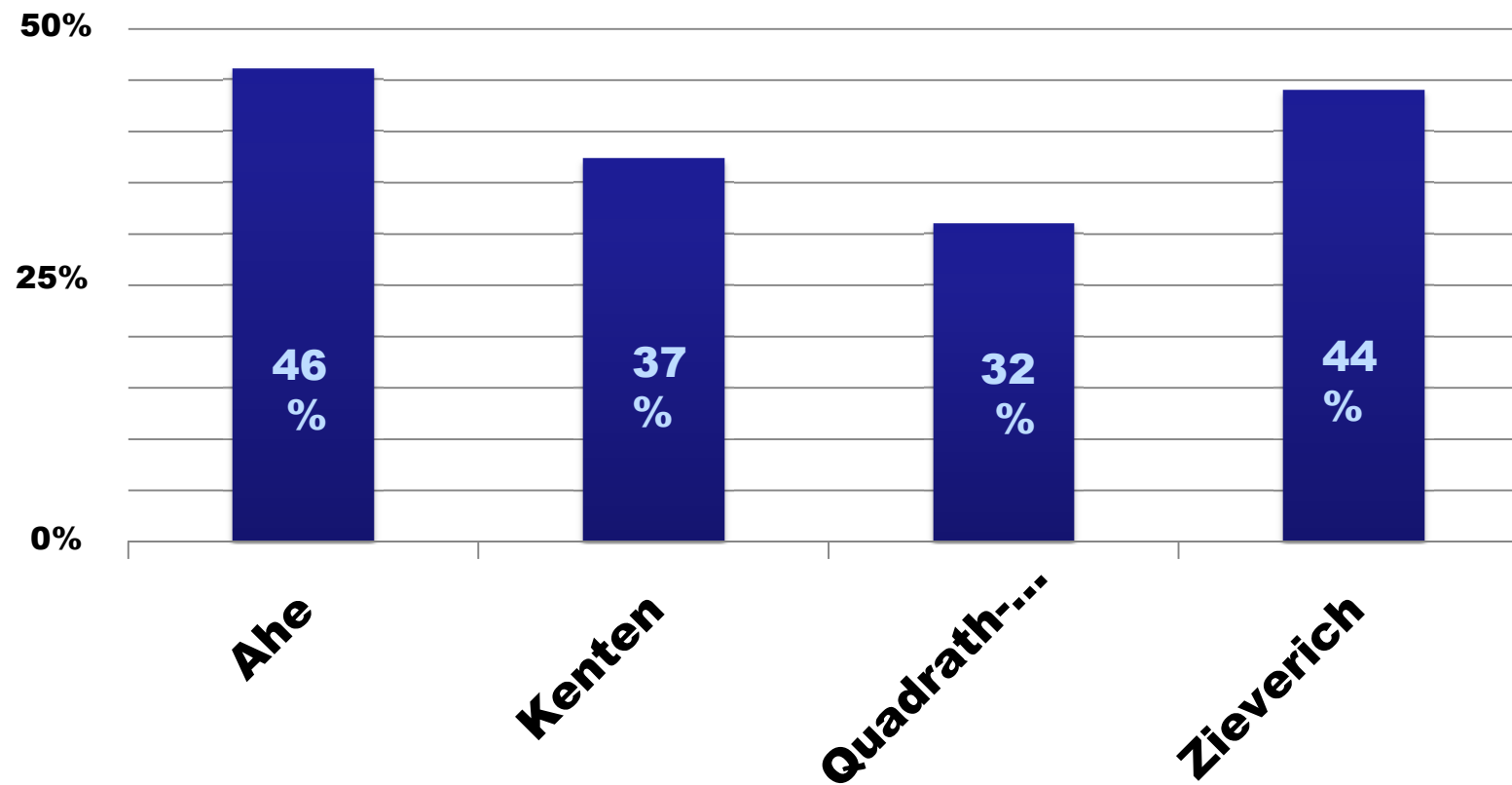
SGB-II-Empfänger Bergheim nach Altersklassen



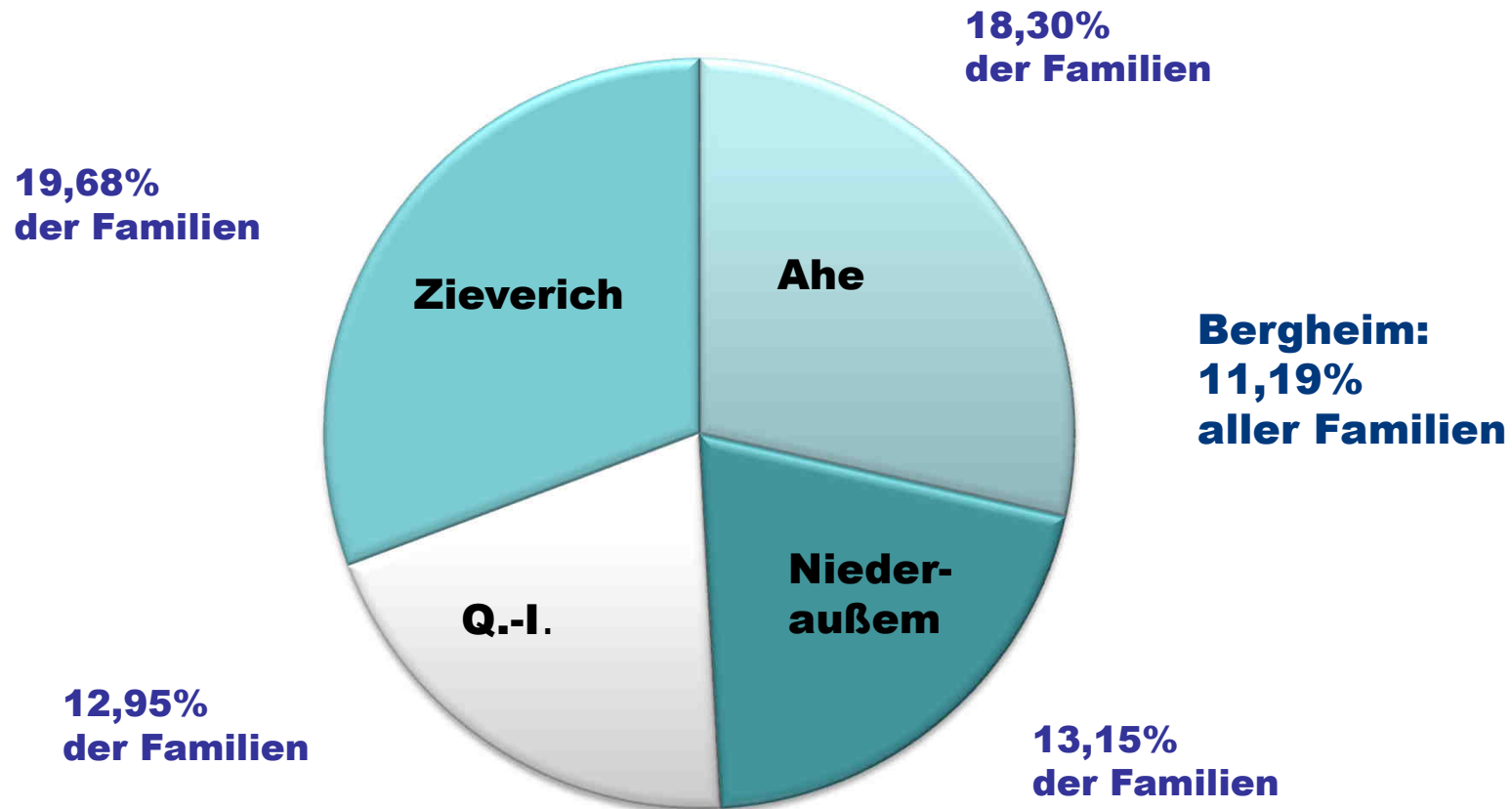
Ausländeranteil SGB-II unter 15 Jahre



SGB-II Rund um die Geburt 0-2 Jahre



SGB-II Alleinerziehende



SGB-II Grundschulbereich 6-10 Jahre

